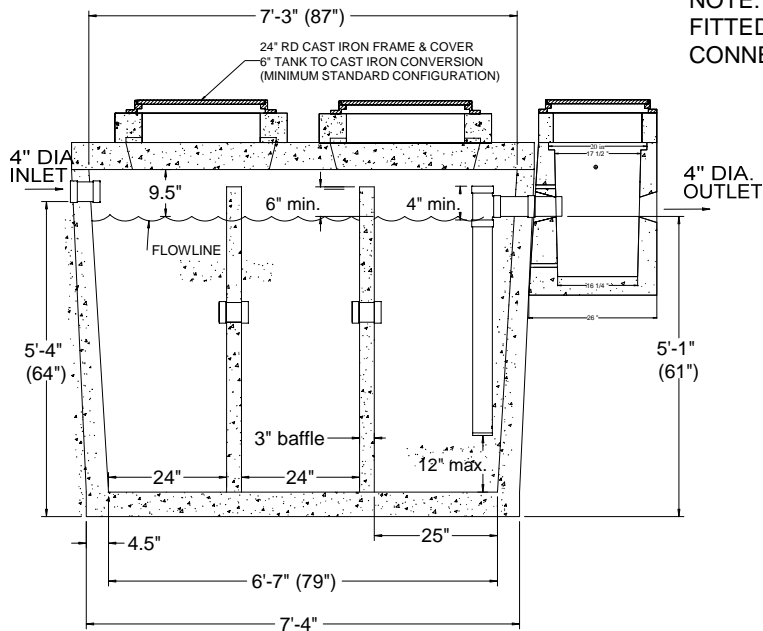


TOP VIEW

SCALE: nts



SIDE VIEW CUTAWAY

SCALE: nts

NOTE: INLET AND OUTLET PIPES ARE FITTED WITH WATERTIGHT PIPE-TO-TANK CONNECTIONS (STANDARD).

NOTES:

1). EXCAVATION SPECIFICATIONS:

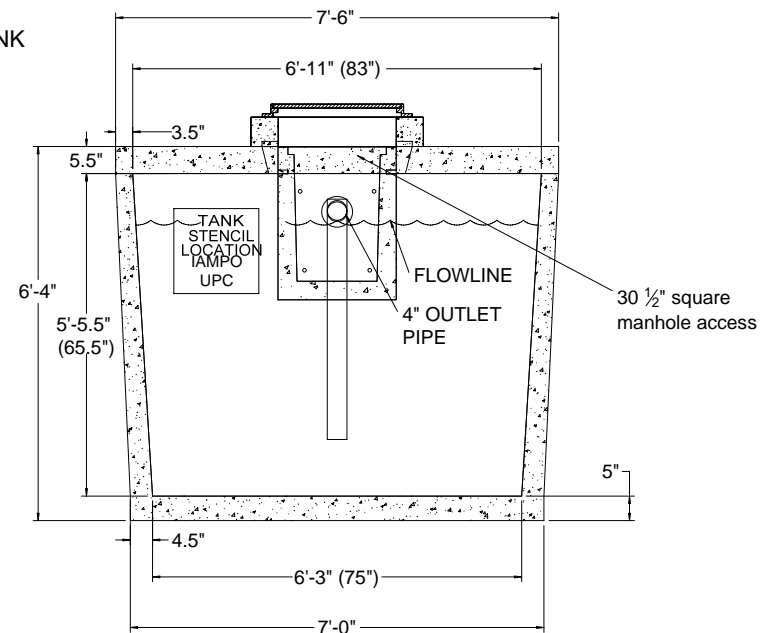
LENGTH 11'-0"
WIDTH 9'-0"
DEPTH BELOW INLET 5'-4"

2). DON CHAPIN PRE-CAST MAY MAKE CHANGES TO THE DESIGN AND OR TO THE DIMENSIONS WITHOUT NOTICE. PLEASE CONTACT DON CHAPIN PRE-CAST WHENEVER NECESSARY TO CONFIRM DESIGN CRITERIA.

3). CERTIFIED ENGINEERING IS AVAILABLE UNPON REQUEST.

4). THIS TANK IS ALSO AVAILABLE AS A TWO COMPARTMENT SAND/OIL INTERCEPTOR

5). INTEGRAL TOP TO BODY DESIGN



END VIEW

SCALE: nts

DON CHAPIN PRE-CAST
2735 BOLSA RD.
HOLLISTER, CA 95023
(831) 630-1042
(831) 630-5763

PRE-CAST CONCRETE WATER TIGHT
IAPMO LISTED CLARIFIER WITH SAMPLE BOX
TRAFFIC RATED TANK
CAPACITY 1500 GALLONS
MODEL IPC1500SB



9/16/09 –